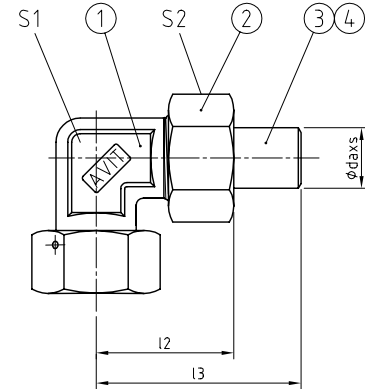
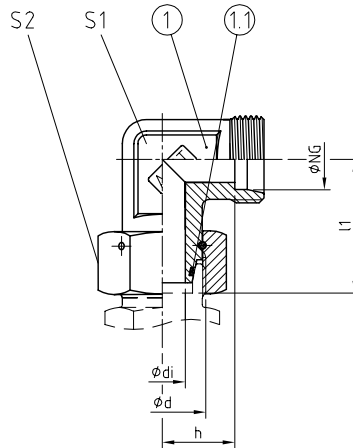




WS [Pos. 1]

WS [Pos. 1-4]



**AVIT, ISO 8434-1 – SWOE
BAUREIHE / SERIES: L = LIGHT / S = HEAVY**

- 24° Dichtkegelanschluss mit eingelegtem O-Ring (FKM) nach ISO 8434-1 und montierter Drahtstiftmutter.
- 24° Konusanschluss nach ISO 8434-1
- 24° seal cone end with mounted O-ring (FKM) acc. ISO 8434-1 and assembled wire nail nut.
- 24° cone end acc. ISO 8434-1

**WERKSTOFF-KOMBINATION
MATERIAL COMBINATION**

| Werkstoff, Oberfläche / Material, Surface | TYP NG - daxs - ** |
|--|--------------------|
| Stahl, verzinkt / Steel, galvanized; NBR | WS 25 - daxs - 01 |
| Stahl, verzinkt / Steel, galvanized; FKM | WS 25 - daxs - 02 |
| Stahl, phosphatiert / Steel, phosphatised; NBR | WS 25 - daxs - 04 |
| Stahl, phosphatiert / Steel, phosphatised; FKM | WS 25 - daxs - 05 |
| Edelstahl 1.4571 / Stainless steel AISI 316Ti; NBR | WS 25 - daxs - 41 |
| Edelstahl 1.4571 / Stainless steel AISI 316Ti; FKM | WS 25 - daxs - 42 |

**BESTELLBEISPIEL
ORDER EXAMPLE**

**STÜCKLISTE
PARTS LIST**

| Pos. | Bezeichnung / Description |
|------------|--|
| 1 | Winkelstutzen mit Drahtstiftmutter / Elbow stud with wire nail nut |
| 1.1 | O-Ring Dichtung / O-ring sealing; FKM |
| 2 | Überwurfmutter / Union nut |
| 3 | 24° Schweißkegel / 24° weld-on nipple |
| 4 | O-Ring Dichtung / O-ring sealing |

| REIHE SERIES | PN ¹ [bar] | NG [mm] | ABMESSUNGEN [mm] DIMENSIONS | | | | | | GEWICHT WEIGHT | | BESTELLCODE ORDER CODE | | |
|-----------------|--------------------------|------------|--------------------------------|-----------------|------|------|-------|-------|-------------------|----|---------------------------|--------|------------|
| | | | d | di ² | h | l1 | l2 | l3 | S1 | S2 | [kg] | Pos. 1 | Pos. 1-4 |
| L | 250 | 15 | M22x1,5 | 10 | 21 | 31 | 38 | 57,5 | 19 | 27 | 0,13 | WS 15 | WS 15 daxs |
| | 160 | 18 | M26x1,5 | 13 | 23,5 | 35,5 | 42 | 62 | 24 | 32 | 0,21 | WS 18 | WS 18 daxs |
| | 160 | 22 | M30x2,0 | 17 | 27,5 | 40,5 | 45,5 | 67 | 27 | 36 | 0,26 | WS 22 | WS 22 daxs |
| | 100 | 28 | M36x2,0 | 22 | 30,5 | 41,5 | 50 | 73,5 | 36 | 46 | 0,49 | WS 28 | WS 28 daxs |
| | 100 | 35 | M45x2,0 | 28 | 34,5 | 51 | 59 | 85,5 | 41 | 50 | 0,64 | WS 35 | WS 35 daxs |
| | 100 | 42 | M52x2,0 | 34 | 40 | 56 | 64,5 | 91 | 50 | 60 | 1,01 | WS 42 | WS 42 daxs |
| S | 630 | 10 | M18x1,5 | 6 | 17,5 | 29 | 35 | 51 | 19 | 22 | 0,10 | WS 10 | WS 10 daxs |
| | 400 | 12 | M20x1,5 | 8 | 21,5 | 31 | 39,5 | 55,5 | 19 | 24 | 0,13 | WS 12 | WS 12 daxs |
| | 400 | 16 | M24x1,5 | 11 | 24,5 | 36,5 | 45 | 66,5 | 24 | 30 | 0,21 | WS 16 | WS 16 daxs |
| | 320 | 20 | M30x2,0 | 14 | 26,5 | 43 | 50 | 73 | 27 | 36 | 0,31 | WS 20 | WS 20 daxs |
| | 320 | 25 | M36x2,0 | 18 | 30 | 48 | 57 | 85 | 36 | 46 | 0,60 | WS 25 | WS 25 daxs |
| | 250 | 30 | M42x2,0 | 23 | 35,5 | 55 | 64 | 93,5 | 41 | 50 | 0,77 | WS 30 | WS 30 daxs |
| | 250 | 38 | M52x2,0 | 30 | 41 | 63 | 73,5 | 106 | 50 | 60 | 1,26 | WS 38 | WS 38 daxs |
| | 250 | 50 | M68x2,0 | 40 | 67 | 94 | 106,5 | 135,5 | 70 | 80 | 3,62 | WS 50 | WS 50 daxs |

1 Druckeinschränkung wegen Drahtstiftmutter! | Pressure restrictions due to wire nail nut!

2 Bitte beachten Sie, dass der Innendurchmesser (di) durch die Kegelseite reduziert wird. | Please note that the inside diameter (di) is reduced by the cone side.