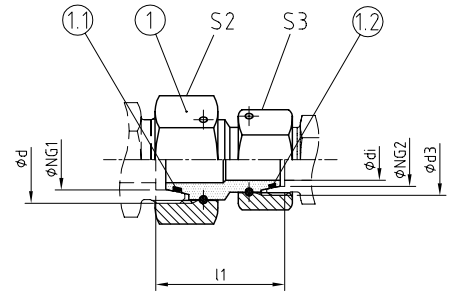
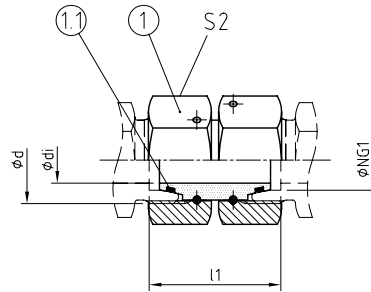




DKS (L, S)

DKS (S>L)



AVIT

BAUREIHE / SERIES: L = LIGHT / S = HEAVY

Beidseitiger 24° Dichtkegelanschluss (DKO) mit aufgezogenem O-Ring (FKM) nach ISO 8434-1 und montierter Drahtstiftmutter.

24° seal cone end (DKO) on both sides with mounted O-ring (FKM) according to ISO 8434-1 and assembled wire nail nut.

WERKSTOFF-KOMBINATION
MATERIAL COMBINATION

Werkstoff, Oberfläche / Material, Surface	TYP NG - **
Stahl, verzinkt / Steel, galvanized; FKM	DKS 25 - 02
Stahl, phosphatiert / Steel, phosphatised; FKM	DKS 25 - 05
Edelstahl 1.4571 / Stainless steel AISI 316Ti; FKM	DKS 25 - 42

BESTELLBEISPIEL
ORDER EXAMPLE

STÜCKLISTE
PARTS LIST

Pos.	Bezeichnung / Description
1	24° Doppelkegel mit Drahtstiftmutter / 24° double cone with wire nail nut
1.1	O-Ring Dichtung / O-ring sealing; FKM
1.2	O-Ring Dichtung / O-ring sealing; FKM

ROHRVERSCHRÄUBUNGEN • VERSCHRÄUBUNGEN MIT 24°-DICHTKEGEL
TUBE CONNECTIONS • 24°-SEAL CONE CONNECTOR

REIHE SERIES	PN ¹ [bar]	NG1 [mm]	NG2 [mm]	ABMESSUNGEN [mm] DIMENSIONS						O-RING		GEWICHT WEIGHT [kg]	BESTELLCODE ORDER CODE
				d	d3	di	l1	S2	S3	Pos. 1.1	Pos. 1.2		
L	250	15	-	M22x1,5	-	10	40,5	27	-	12,0x2,0	-	0,132	DKS 15
	160	18	-	M26x1,5	-	13	39,5	32	-	15,0x2,0	-	0,182	DKS 18
	160	22	-	M30x2,0	-	17	45,5	36	-	20,0x2,0	-	0,269	DKS 22
	100	28	-	M36x2,0	-	22	49	46	-	26,0x2,0	-	0,480	DKS 28
	100	35	-	M45x2,0	-	28	55	50	-	32,0x2,5	-	0,485	DKS 35
	100	42	-	M52x2,0	-	34	60	60	-	38,0x2,5	-	0,733	DKS 42
S>L	250	16	15	M24x1,5	M22x1,5	10	41	30	27	12,0x2,0	12,0x2,0	0,152	DKS 16>15
	160	20	18	M30x2,0	M26x1,5	13	46,5	36	32	16,3x2,4	15,0x2,0	0,238	DKS 20>18
	160	25	22	M36x2,0	M30x2,0	17	53	46	36	20,3x2,4	20,0x2,0	0,451	DKS 25>22
	100	30	28	M42x2,0	M36x2,0	22	54	50	46	25,3x2,4	26,0x2,0	0,590	DKS 30>28
	100	38	35	M52x2,0	M45x2,0	28	58,5	60	50	33,3x2,4	32,0x2,5	0,760	DKS 38>35
	100	50	42	M68x2,0	M52x2,0	34	72,5	80	60	46,0x3,0	38,0x2,5	1,618	DKS 50>42
S	630	10	-	M18x1,5	-	6	37	22	-	7,5x1,5	-	0,086	DKS 10
	630	12	-	M20x1,5	-	8	40	24	-	9,0x1,5	-	0,105	DKS 12
	420	16	12	M24x1,5	M20x1,5	8	43,5	30	24	12,0x2,0	9,0x1,5	0,161	DKS 16>12
	315	20	16	M30x2,0	M24x1,5	11	50	36	30	16,3x2,4	12,0x2,0	0,262	DKS 20>16
	315	25	20	M36x2,0	M30x2,0	14	56,5	46	36	20,3x2,4	16,3x2,4	0,286	DKS 25>20
	250	30	25	M42x2,0	M36x2,0	18	60	50	46	25,3x2,4	20,3x2,4	0,675	DKS 30>25
	250	38	-	M52x2,0	-	23	63	-	-	-	-	0,729	DKS 38
	250	50	-	M68x2,0	-	40	86,5	80	-	46,0x3,0	-	2,488	DKS 50

1 Druckeinschränkung wegen Drahtstiftmutter! | Pressure restrictions due to wire nail nut!