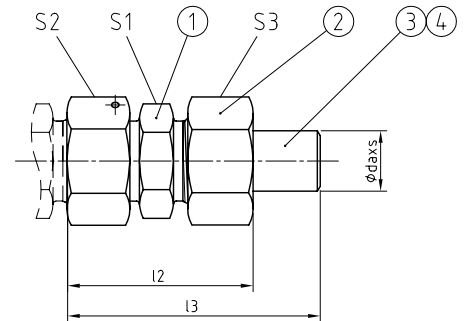
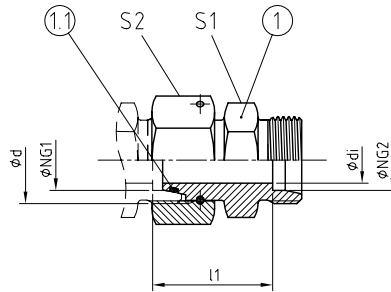




GDA [Pos. 1]

GDA [Pos. 1-4]



**AVIT, ISO 8434-1 – RDSW
BAUREIHE / SERIES: L = LIGHT / S = HEAVY**

Mit dem geraden 24° Konus Adapter reduzieren Sie den Konusstützen oder können auch defekte Schneidringanschlüsse instandsetzen.

With the straight 24° cone adapter you can reduce the cone connection or repair damaged cutting ring connections.

**WERKSTOFF-KOMBINATION
MATERIAL COMBINATION**

Werkstoff, Oberfläche / Material, Surface	TYP NG1-NG2-daxs-**
Stahl, verzinkt / Steel, galvanized; NBR	GDA 25 - daxs - 01
Stahl, verzinkt / Steel, galvanized; FKM	GDA 25 - daxs - 02
Stahl, phosphatiert / Steel, phosphatised; NBR	GDA 25 - daxs - 04
Stahl, phosphatiert / Steel, phosphatised; FKM	GDA 25 - daxs - 05
Edelstahl 1.4571 / Stainless steel AISI 316Ti; NBR	GDA 25 - daxs - 41
Edelstahl 1.4571 / Stainless steel AISI 316Ti; FKM	GDA 25 - daxs - 42

**BESTELLBEISPIEL
ORDER EXAMPLE**

**STÜCKLISTE
PARTS LIST**

Pos.	Bezeichnung / Description
1	Stützen mit Drahtstiftmutter / Stud with wire nail nut
1.1	O-Ring Dichtung / O-ring sealing; FKM
2	Überwurfmutter / Union nut
3	24° Schweißkegel / 24° weld-on nipple
4	O-Ring Dichtung / O-ring sealing

ROHRVERSCHRÄUBUNGEN • VERSCHRÄUBUNGEN MIT 24°-DICHTKEGEL
TUBE CONNECTIONS • 24°-SEAL CONE CONNECTOR

REIHE SERIES	PN ¹ [bar]	NG1 [mm]	NG2 [mm]	d	ABMESSUNGEN [mm] DIMENSIONS							O-RING Pos. 1.1	GEWICHT WEIGHT [kg]	BESTELLCODE ORDER CODE		
					di	l1	l2	l3	S1	S2	S3			Pos. 1	Pos. 1-4	
L	250	18	15	M26x1,5	12	33,5	50,5	70	27	32	27	15,0x2,0	0,151	GDA 18>15	GDA 18>15 daxs	
			18	13	33	52	73	32	32	0,146	GDA 18		GDA 18 daxs			
		160	22	15	M30x2,0	12	40	57	76,5	32	36	27	20,0x2,0	0,246	GDA 22>15	GDA 22>15 daxs
				18	15	39,5	59	79	32	36	32	0,232		GDA 22>18	GDA 22>18 daxs	
	100	28	22	M36x2,0	17	41,5	59,5	80,5	41	46	36	26,0x2,0	0,222	GDA 22	GDA 22 daxs	
			15	12	40,5	58	77	27	0,313	GDA 28>15	GDA 28>15 daxs					
			18	15	40	59,5	80	32	0,300	GDA 28>18	GDA 28>18 daxs					
			22	19	42	60,5	81,5	36	0,291	GDA 28>22	GDA 28>22 daxs					
	100	35	28	M45x2,0	22	43	62,5	86	50	50	41	32,0x2,5	0,388	GDA 28	GDA 28 daxs	
			15	12	46,5	64	83	27	0,600	GDA 35>15	GDA 35>15 daxs					
			18	15	46	65,5	86,5	32	0,588	GDA 35>18	GDA 35>18 daxs					
			22	19	48	66,5	87,5	36	0,570	GDA 35>22	GDA 35>22 daxs					
	100	42	28	M52x2,0	24	48	67,5	91	55	60	41	38,0x2,5	0,534	GDA 35>28	GDA 35>28 daxs	
			35	28	47,5	71,5	99	50	0,560	GDA 35	GDA 35 daxs					
			15	12	48,5	65,5	85	27	0,786	GDA 42>15	GDA 42>15 daxs					
			18	15	48	67	87	32	0,782	GDA 42>18	GDA 42>18 daxs					
22			19	49,5	68	89,5	36	0,765	GDA 42>22	GDA 42>22 daxs						
28			24	49,5	69	93	41	0,732	GDA 42>28	GDA 42>28 daxs						
100	42	35	M52x2,0	30	48	73	100	50	60	50	38,0x2,5	0,695	GDA 42>35	GDA 42>35 daxs		
		42	34	48,5	73,5	99,5	60	0,650	GDA 42	GDA 42 daxs						

Fortsetzung nächste Seite | Continued on next page

1 Druckeinschränkung wegen Drahtstiftmutter! | Pressure restrictions due to wire nail nut!

REIHE SERIES	PN ¹ [bar]	NG1 [mm]	NG2 [mm]	ABMESSUNGEN [mm] DIMENSIONS								O-RING Pos. 1.1	GEWICHT WEIGHT [kg]	BESTELLCODE ORDER CODE	
				d	di	l1	l2	l3	S1	S2	S3			Pos. 1	Pos. 1-4
S	630	10	08	M18x1,5	5	33,5	48	64,5	19	22	19	7,5x1,5	0,079	GDA 10>08	GDA 10>08 daxs
			10		6	33	50,5	67	22	22	0,086		GDA 10	GDA 10 daxs	
	630	12	10	M20x1,5	7	33,5	51	67	22	24	22	9,0x1,5	0,095	GDA 12>10	GDA 12>10 daxs
			12		8	33,5	51,5	67,5	22	24	0,096		GDA 12	GDA 12 daxs	
	400	16	10	M24x1,5	7	36,5	54	70	24	30	22	12,0x2,0	0,157	GDA 16>10	GDA 16>10 daxs
			12		8	35,5	53	69,5	24	30	0,157		GDA 16>12	GDA 16>12 daxs	
			16		11	37,5	58	79,5	27	30	0,152		GDA 16	GDA 16 daxs	
	320	20	10	M30x2,0	7	42	60,5	76,5	30	36	22	16,3x2,4	0,243	GDA 20>10	GDA 20>10 daxs
			12		8	42	61	77	30	24	0,244		GDA 20>12	GDA 20>12 daxs	
			16		12	43	64,5	86	30	30	0,230		GDA 20>16	GDA 20>16 daxs	
			20		14	44	68	90,5	32	36	0,253		GDA 20	GDA 20	
	320	25	10	M36x2,0	7	46	64	80,5	36	46	22	20,3x2,4	0,420	GDA 25>10	GDA 25>10 daxs
			12		8	46	64	81	36	24	0,421		GDA 25>12	GDA 25>12 daxs	
			16		12	47	68	89,5	36	30	0,413		GDA 25>16	GDA 25>16 daxs	
			20		15	47	71,5	94,5	36	36	0,415		GDA 25>20	GDA 25>20 daxs	
			25		19	48	75	102,5	41	46	0,454		GDA 25	GDA 25 daxs	
	250	30	10	M42x2,0	7	48	65,5	81,5	41	50	22	25,3x2,4	0,517	GDA 30>10	GDA 30>10 daxs
			12		8	48	66	82	41	24	0,518		GDA 30>12	GDA 30>12 daxs	
			16		12	49	69,5	91	41	30	0,511		GDA 30>16	GDA 30>16 daxs	
			20		15	49	73	95,5	41	36	0,514		GDA 30>20	GDA 30>20 daxs	
			25		19	49	76,5	104	41	46	0,512		GDA 30>25	GDA 30>25 daxs	
			30		24	51	79,5	109	46	50	0,548		GDA 30	GDA 30 daxs	
	250	38	12	M52x2,0	8	52	70	86	50	60	24	33,3x2,4	0,835	GDA 38>12	GDA 38>12 daxs
			16		12	53	74	95,5	50	30	0,829		GDA 38>16	GDA 38>16 daxs	
			20		15	53	77,5	100,5	50	36	0,832		GDA 38>20	GDA 38>20 daxs	
			25		19	54	81	108,5	50	46	0,830		GDA 38>25	GDA 38>25 daxs	
			30		24	54,5	83	112,5	50	50	0,816		GDA 38>30	GDA 38>30 daxs	
			38		30	54	86,5	119	55	60	0,806		GDA 38	GDA 38 daxs	
	250	50	16	M68x2,0	12	67,5	88	109,5	70	80	30	46,0x3,0	2,020	GDA 50>16	GDA 50>16 daxs
			20		15	67,5	91,5	114,5	70	36	2,010		GDA 50>20	GDA 50>20 daxs	
25			19		68	95	122,5	70	46	2,010	GDA 50>25		GDA 50>25 daxs		
30			24		68,5	97	126,5	70	50	1,980	GDA 50>30		GDA 50>30 daxs		
38			30		68	100,5	133	70	60	1,950	GDA 50>38		GDA 50>38 daxs		
50			40		70	109,5	138,5	70	80	1,910	GDA 50		GDA 50 daxs		



ROHRVERSCHRÄUBUNGEN • VERSCHRÄUBUNGEN MIT 24°-DICHTKEGEL
TUBE CONNECTIONS • 24°-SEAL CONE CONNECTOR

1 Druckeinschränkung wegen Drahtstiftmutter | Pressure restrictions due to wire nail nut