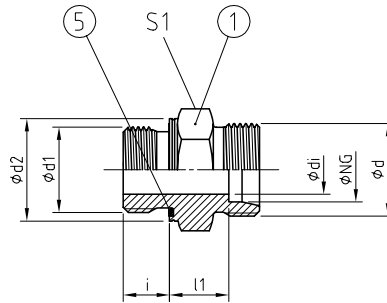
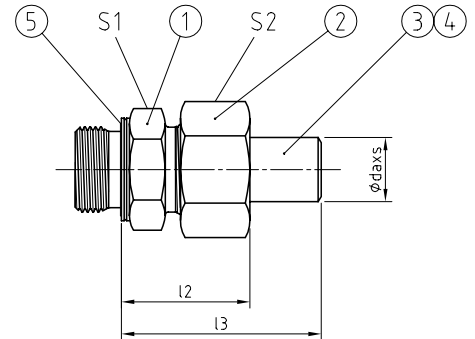




GU.M [Pos. 1+5]



GU.M [Pos. 1-5]



**AVIT, ISO 8434-1 – SDS TYP E  
BAUREIHE / SERIES: L = LIGHT / S = HEAVY**

Einschraubzapfen<sup>1</sup> mit U-Ring Dichtung (ED) und metrischem Gewinde nach ISO 9974-2.

Stud end<sup>1</sup> with U-ring sealing (ED) and metric thread acc. ISO 9974-2.

**WERKSTOFF-KOMBINATION  
MATERIAL COMBINATION**

| Werkstoff, Oberfläche / Material, Surface          | TYP NG - daxx - **  |
|--|---------------------|
| Stahl, verzinkt / Steel, galvanised; NBR           | GUVM 25 - daxx - 01 |
| Stahl, verzinkt / Steel, galvanised; FKM           | GUVM 25 - daxx - 02 |
| Stahl, phosphatiert / Steel, phosphatised; NBR     | GUVM 25 - daxx - 04 |
| Stahl, phosphatiert / Steel, phosphatised; FKM     | GUVM 25 - daxx - 05 |
| Edelstahl 1.4571 / Stainless steel AISI 316Ti; NBR | GUVM 25 - daxx - 41 |
| Edelstahl 1.4571 / Stainless steel AISI 316Ti; FKM | GUVM 25 - daxx - 42 |

**BESTELLBEISPIEL  
ORDER EXAMPLE**

**STÜCKLISTE  
PARTS LIST**

| Pos. | Bezeichnung / Description             |
|------|---------------------------------------|
| 1    | Einschraubstutzen / Stud connector    |
| 2    | Überwurfmutter / Union nut            |
| 3    | 24° Schweißkegel / 24° weld-on nipple |
| 4    | O-Ring Dichtung / O-ring sealing      |
| 5    | U-Ring Dichtung / U-ring sealing      |

| REIHE<br>SERIES | PN<br>[bar] | NG<br>[mm] | ABMESSUNGEN [mm]<br>DIMENSIONS |         |         |    |    |      |      |      |    | U-RING        |               | GEWICHT<br>WEIGHT<br>[kg] | BESTELLCODE<br>ORDER CODE |               |
|-----------------|-------------|------------|--------------------------------|---------|---------|----|----|------|------|------|----|---------------|---------------|---------------------------|---------------------------|---------------|
|                 |             |            | d1                             | d2      | d       | di | i  | l1   | l2   | l3   | S1 | S2            | Pos. 5        |                           | Pos. 1+5                  | Pos. 1-5      |
| L               | 400         | 15         | M16x1,5                        | 21,9    |         | 9  | 12 | 15   | 32,5 | 51,5 | 24 |               | 13,8x18,9x1,5 | 0,060                     | GURM 15                   | GURM 15 daxx  |
|                 |             |            | M18x1,5                        | 23,9    | M22x1,5 | 11 | 12 | 14   | 31,5 | 50,5 | 24 | 27            | 15,7x20,9x1,5 | 0,054                     | GUVM 15                   | GUVM 15 daxx  |
|                 |             |            | M22x1,5                        | 26,9    |         | 12 | 14 | 16   | 33,5 | 52,5 | 27 |               | 19,6x24,3x1,5 | 0,085                     | GUGM 15                   | GUGM 15 daxx  |
|                 | 400         | 18         | M18x1,5                        | 23,9    |         | 9  | 12 | 15   | 34   | 54   | 27 |               | 15,7x20,9x1,5 | 0,076                     | GURM 18                   | GURM 18 daxx  |
|                 |             |            | M22x1,5                        | 26,9    | M26x1,5 | 14 | 14 | 14,5 | 33,5 | 53,5 | 27 | 32            | 19,6x24,3x1,5 | 0,079                     | GUVM 18                   | GUVM 18 daxx  |
|                 |             |            | M26x1,5                        | 31,9    |         | 15 | 16 | 16,5 | 35,5 | 55,5 | 32 |               | 23,9x29,2x1,5 | 0,121                     | GUGM 18                   | GUGM 18 daxx  |
|                 | 250         | 22         | M22x1,5                        | 26,9    |         | 14 | 14 | 18,5 | 36,5 | 57,5 | 32 |               | 19,6x24,3x1,5 | 0,116                     | GURM 22                   | GURM 22 daxx  |
|                 |             |            | M26x1,5                        | 31,9    | M30x2,0 | 18 | 16 | 16,5 | 35   | 55,5 | 32 | 36            | 23,9x29,2x1,5 | 0,110                     | GUVM 22                   | GUVM 22 daxx  |
|                 |             |            | M33x2,0                        | 39,9    |         | 19 | 18 | 19,5 | 38   | 59   | 41 |               | 29,7x35,7x2,0 | 0,212                     | GUGM 22                   | GUGM 22 daxx  |
|                 | 250         | 28         | M26x1,5                        | 31,9    |         | 18 | 16 | 19,5 | 39   | 62,5 | 41 |               | 23,9x29,2x1,5 | 0,184                     | GURM 28                   | GURM 28 daxx  |
|                 |             |            | M33x2,0                        | 39,9    | M36x2,0 | 23 | 18 | 17,5 | 37   | 60,5 | 41 | 41            | 29,7x35,7x2,0 | 0,175                     | GUVM 28                   | GUVM 28 daxx  |
|                 |             |            | M42x2,0                        | 49,9    |         | 24 | 20 | 21,5 | 41   | 64,5 | 50 |               | 38,8x45,8x2,0 | 0,365                     | GUGM 28                   | GUGM 28 daxx  |
|                 | 250         | 35         | M33x2,0                        | 39,9    |         | 23 | 18 | 19,5 | 44   | 70,5 | 46 |               | 29,7x35,7x2,0 | 0,269                     | GURM 35                   | GURM 35 daxx  |
|                 |             |            | M42x2,0                        | 49,9    | M45x2,0 | 30 | 20 | 17,5 | 42   | 68,5 | 50 | 50            | 38,8x45,8x2,0 | 0,290                     | GUVM 35                   | GUVM 35 daxx  |
|                 |             |            | M48x2,0                        | 54,9    |         | 30 | 22 | 21,5 | 46   | 72,5 | 55 |               | 44,7x50,7x2,0 | 0,472                     | GUGM 35                   | GUGM 35 daxx  |
|                 | 250         | 42         | M33x2,0                        | 39,9    |         | 23 | 18 | 21   | 45,5 | 72   | 55 |               | 29,7x35,7x2,0 | 0,384                     | GURM 421                  | GURM 421 daxx |
| M42x2,0         |             |            | 49,9                           | M52x2,0 | 30      | 20 | 21 | 45,5 | 72   | 55   | 60 | 38,8x45,8x2,0 | 0,403         | GURM 42                   | GURM 42 daxx              |               |
| M48x2,0         |             |            | 54,9                           |         | 36      | 22 | 19 | 43,5 | 70   | 55   |    | 44,7x50,7x2,0 | 0,373         | GUVM 42                   | GUVM 42 daxx              |               |

Fortsetzung nächste Seite | Continued on next page

<sup>1</sup> Metrische Einschraubzapfen werden zur Identifikation mit einer umlaufenden Kerbe gekennzeichnet. | Metric stud ends are marked with a circumferential groove for identification.

| REIHE<br>SERIES | PN<br>[bar] | NG<br>[mm] | ABMESSUNGEN [mm]<br>DIMENSIONS |         |         |    |      |      |       |      |    |               | U-RING        |               | GEWICHT<br>WEIGHT<br>[kg] | BESTELLCODE<br>ORDER CODE |               |
|-----------------|-------------|------------|--------------------------------|---------|---------|----|------|------|-------|------|----|---------------|---------------|---------------|---------------------------|---------------------------|---------------|
|                 |             |            | d1                             | d2      | d       | di | i    | l1   | l2    | l3   | S1 | S2            | Pos. 5        | Pos. 1+5      |                           | Pos. 1-5                  |               |
| S               | 800         | 10         | M14x1,5                        | 18,9    |         | 5  | 12   | 15   | 32,5  | 48,5 | 19 |               |               | 11,6x16,5x1,5 | 0,048                     | GURM 10                   | GURM 10 daxs  |
|                 |             |            | M16x1,5                        | 21,9    | M18x1,5 | 7  | 12   | 15   | 32,5  | 48,5 | 22 | 22            | 13,8x18,9x1,5 | 0,056         | GUVM 10                   | GUVM 10 daxs              |               |
|                 |             |            | M18x1,5                        | 23,9    |         | 7  | 12   | 16   | 33,5  | 49,5 | 24 |               | 15,7x20,9x1,5 | 0,069         | GUGM 10                   | GUGM 10 daxs              |               |
|                 | 630         | 12         | M16x1,5                        | 21,9    |         | 7  | 12   | 14,5 | 32,5  | 48,5 | 22 |               |               | 13,8x18,9x1,5 | 0,059                     | GURM 12                   | GURM 12 daxs  |
|                 |             |            | M18x1,5                        | 23,9    | M20x1,5 | 8  | 12   | 17   | 35    | 51,5 | 24 | 24            | 15,7x20,9x1,5 | 0,075         | GUVM 12                   | GUVM 12 daxs              |               |
|                 |             |            | M22x1,5                        | 26,9    |         | 8  | 14   | 17,5 | 35,5  | 51,5 | 27 |               | 19,6x24,3x1,5 | 0,094         | GUGM 12                   | GUGM 12 daxs              |               |
|                 | 630         | 16         | M16x1,5                        | 21,9    |         | 7  | 12   | 17,5 | 38    | 59,5 | 27 |               |               | 13,8x18,9x1,5 | 0,090                     | GURM 161                  | GURM 161 daxs |
|                 |             |            | M18x1,5                        | 23,9    |         | 8  | 12   | 18   | 38,5  | 60,5 | 27 |               |               | 15,7x20,9x1,5 | 0,096                     | GURM 16                   | GURM 16 daxs  |
|                 |             |            | M22x1,5                        | 26,9    | M24x1,5 | 12 | 14   | 18,5 | 39    | 60,5 | 27 | 30            | 19,6x24,3x1,5 | 0,101         | GUVM 16                   | GUVM 16 daxs              |               |
|                 |             |            | M27x2,0                        | 31,9    |         | 12 | 16   | 20,5 | 41    | 62,5 | 32 |               | 23,9x29,2x1,5 | 0,150         | GUGM 16                   | GUGM 16 daxs              |               |
|                 |             |            | M33x2,0                        | 39,9    |         | 12 | 18   | 22,5 | 43    | 64,5 | 41 |               | 29,7x35,7x2,0 | 0,251         | GUGM 161                  | GUGM 161 daxs             |               |
|                 | 420         | 20         | M18x1,5                        | 23,9    |         | 8  | 12   | 20   | 44    | 66,5 | 32 |               |               | 15,7x20,9x1,5 | 0,149                     | GURM 201                  | GURM 201 daxs |
|                 |             |            | M22x1,5                        | 26,9    |         | 12 | 14   | 20,5 | 44,5  | 67   | 32 |               |               | 19,6x24,3x1,5 | 0,154                     | GURM 20                   | GURM 20 daxs  |
|                 |             |            | M27x2,0                        | 31,9    | M30x2,0 | 15 | 16   | 20,5 | 44,5  | 67   | 32 | 36            | 23,9x29,2x1,5 | 0,166         | GUVM 20                   | GUVM 20 daxs              |               |
|                 |             |            | M33x2,0                        | 39,9    |         | 15 | 18   | 22,5 | 46,5  | 69   | 41 |               | 29,7x35,7x2,0 | 0,267         | GUGM 20                   | GUGM 20 daxs              |               |
|                 |             |            | M42x2,0                        | 49,9    |         | 15 | 20   | 24,5 | 48,5  | 71,5 | 50 |               | 38,8x45,8x2,0 | 0,435         | GUGM 201                  | GUGM 201 daxs             |               |
|                 | 420         | 25         | M22x1,5                        | 26,9    |         | 12 | 14   | 23   | 50    | 77,5 | 41 |               |               | 19,6x24,3x1,5 | 0,258                     | GURM 251                  | GURM 251 daxs |
|                 |             |            | M27x2,0                        | 31,9    |         | 15 | 16   | 23   | 50    | 77,5 | 41 |               |               | 23,9x29,2x1,5 | 0,270                     | GURM 25                   | GURM 25 daxs  |
|                 |             |            | M33x2,0                        | 39,9    | M36x2,0 | 19 | 18   | 23   | 50    | 77,5 | 41 | 46            | 29,7x35,7x2,0 | 0,288         | GUVM 25                   | GUVM 25 daxs              |               |
|                 |             |            | M42x2,0                        | 49,9    |         | 19 | 20   | 25   | 52    | 79,5 | 50 |               | 38,8x45,8x2,0 | 0,495         | GUGM 25                   | GUGM 25 daxs              |               |
|                 |             |            | M48x2,0                        | 54,9    |         | 19 | 22   | 26   | 53    | 80,5 | 55 |               | 44,7x50,7x2,0 | 0,560         | GUGM 251                  | GUGM 251 daxs             |               |
|                 | 420         | 30         | M27x2,0                        | 31,9    |         | 15 | 16   | 24,5 | 53    | 82,5 | 46 |               |               | 23,9x29,2x1,5 | 0,360                     | GURM 301                  | GURM 301 daxs |
|                 |             |            | M33x2,0                        | 39,9    |         | 19 | 18   | 24,5 | 53    | 82,5 | 46 |               |               | 29,7x35,7x2,0 | 0,380                     | GURM 30                   | GURM 30 daxs  |
|                 |             |            | M42x2,0                        | 49,9    | M42x2,0 | 24 | 20   | 23,5 | 52    | 81,5 | 50 | 50            | 38,8x45,8x2,0 | 0,452         | GUVM 30                   | GUVM 30 daxs              |               |
|                 |             |            | M48x2,0                        | 54,9    |         | 24 | 22   | 26,5 | 55    | 84,5 | 55 |               | 44,7x50,7x2,0 | 0,645         | GUGM 30                   | GUGM 30 daxs              |               |
|                 |             |            | M60x2,0                        | 69,9    |         | 24 | 24   | 30,5 | 59    | 88,5 | 70 |               | 56,1x62,7x2,5 | 0,971         | GUGM 301                  | GUGM 301 daxs             |               |
|                 | 420         | 38         | M33x2,0                        | 39,9    |         | 19 | 18   | 26   | 58,5  | 91   | 55 |               |               | 29,7x35,7x2,0 | 0,578                     | GURM 381                  | GURM 381 daxs |
|                 |             |            | M42x2,0                        | 49,9    |         | 24 | 20   | 26   | 58,5  | 91   | 55 |               |               | 38,8x45,8x2,0 | 0,626                     | GURM 38                   | GURM 38 daxs  |
|                 |             |            | M48x2,0                        | 54,9    | M52x2,0 | 30 | 22   | 26   | 58,5  | 91   | 55 | 60            | 44,7x50,7x2,0 | 0,632         | GUVM 38                   | GUVM 38 daxs              |               |
|                 |             |            | M50x2,0                        | 59,9    |         | 30 | 24   | 27,5 | 60    | 92,5 | 60 |               | 50,4x56,7x2,5 | 0,771         | GUGM 38                   | GUGM 38 daxs              |               |
| M60x2,0         |             |            | 69,9                           |         | 30      | 24 | 30   | 62,5 | 95    | 70   |    | 56,1x62,7x2,5 | 1,02          | GUGM 381      | GUGM 381 daxs             |                           |               |
| 420             | 50          | M48x2,0    | 54,9                           |         | 30      | 22 | 31   | 70,5 | 99,5  | 70   |    |               | 44,7x50,7x2,0 | 1,13          | GURM 501                  | GURM 501 daxs             |               |
|                 |             | M50x2,0    | 59,9                           | M68x2,0 | 33      | 22 | 31,5 | 71   | 100   | 70   | 80 | 50,4x56,7x2,5 | 1,13          | GURM 50       | GURM 50 daxs              |                           |               |
|                 |             | M60x2,0    | 69,9                           |         | 40      | 24 | 32   | 71,5 | 100,5 | 70   |    | 56,1x62,7x2,5 | 1,15          | GUVM 50       | GUVM 50 daxs              |                           |               |

2  
 ROHRVERSCHRAUBUNGEN • EINSCHRAUBVERSCHRAUBUNGEN  
 TUBE CONNECTIONS • MALE STUD COUPLINGS

1 Metrische Einschraubzapfen werden zur Identifikation mit einer umlaufenden Kerbe gekennzeichnet. | Metric stud ends are marked with a circumferential groove for identification.