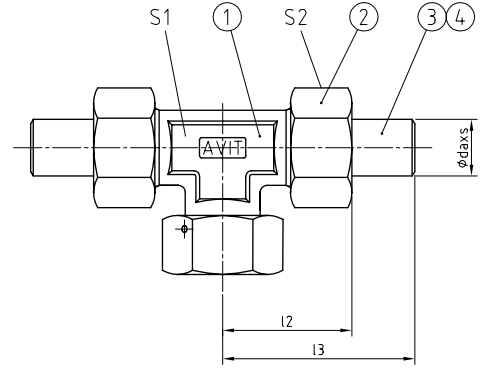
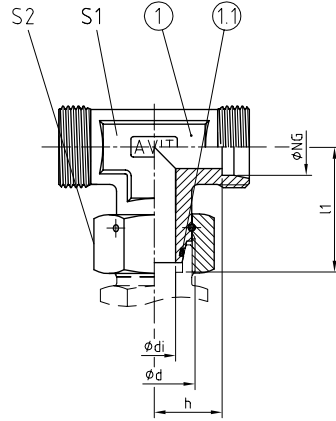




TS [Pos. 1]

TS [Pos. 1-4]



2

ROHRVERSCHRAUBUNGEN • VERSCHRAUBUNGEN MIT 24°-DICHTKEGEL  
TUBE CONNECTIONS • 24°-SEAL CONE CONNECTOR

**AVIT, ISO 8434-1 – SWOBT  
BAUREIHE / SERIES: L = LIGHT / S = HEAVY**

- 24° Dichtkegelschluss mit eingelegetem O-Ring (FKM) nach ISO 8434-1 und montierter Drahtstiftmutter.
- 24° Konusanschluss nach ISO 8434-1
- 24° seal cone end with mounted O-ring (FKM) acc. ISO 8434-1 and assembled wire nail nut.
- 24° cone end acc. ISO 8434-1

**WERKSTOFF-KOMBINATION  
MATERIAL COMBINATION**

| Werkstoff, Oberfläche / Material, Surface          | TYP NG - daxx - ** |
|--|--------------------|
| Stahl, verzinkt / Steel, galvanized; NBR           | TS 25 - daxx - 01  |
| Stahl, verzinkt / Steel, galvanized; FKM           | TS 25 - daxx - 02  |
| Stahl, phosphatiert / Steel, phosphatised; NBR     | TS 25 - daxx - 04  |
| Stahl, phosphatiert / Steel, phosphatised; FKM     | TS 25 - daxx - 05  |
| Edelstahl 1.4571 / Stainless steel AISI 316Ti; NBR | TS 25 - daxx - 41  |
| Edelstahl 1.4571 / Stainless steel AISI 316Ti; FKM | TS 25 - daxx - 42  |

**BESTELLBEISPIEL  
ORDER EXAMPLE**

**STÜCKLISTE  
PARTS LIST**

| Pos.       | Bezeichnung / Description                                  |
|------------|--|
| <b>1</b>   | T-Stutzen mit Drahtstiftmutter / T-Stud with wire nail nut |
| <b>1.1</b> | O-Ring Dichtung / O-ring sealing; <b>FKM</b>               |
| <b>2</b>   | Überwurfmutter / Union nut                                 |
| <b>3</b>   | 24° Schweißkegel / 24° weld-on nipple                      |
| <b>4</b>   | O-Ring Dichtung / O-ring sealing                           |

| REIHE<br>SERIES | PN <sup>1</sup><br>[bar] | NG<br>[mm] | ABMESSUNGEN [mm]<br>DIMENSIONS |                 |      |      |       |       | GEWICHT<br>WEIGHT |    | BESTELLCODE<br>ORDER CODE |        |            |
|-----------------|--------------------------|------------|--------------------------------|-----------------|------|------|-------|-------|-------------------|----|---------------------------|--------|------------|
|                 |                          |            | d                              | di <sup>2</sup> | h    | l1   | l2    | l3    | S1                | S2 | [kg]                      | Pos. 1 | Pos. 1-4   |
| L               | 250                      | <b>15</b>  | M22x1,5                        | 10              | 21   | 31   | 38    | 57,5  | 19                | 27 | 0,16                      | TS 15  | TS 15 daxx |
|                 | 160                      | <b>18</b>  | M26x1,5                        | 13              | 23,5 | 35,5 | 42    | 62    | 24                | 32 | 0,24                      | TS 18  | TS 18 daxx |
|                 | 160                      | <b>22</b>  | M30x2,0                        | 17              | 27,5 | 40,5 | 45,5  | 67    | 27                | 36 | 0,31                      | TS 22  | TS 22 daxx |
|                 | 100                      | <b>28</b>  | M36x2,0                        | 22              | 30,5 | 41,5 | 50    | 73,5  | 36                | 46 | 0,56                      | TS 28  | TS 28 daxx |
|                 | 100                      | <b>35</b>  | M45x2,0                        | 28              | 34,5 | 51   | 59    | 85,5  | 41                | 50 | 0,81                      | TS 35  | TS 35 daxx |
|                 | 100                      | <b>42</b>  | M52x2,0                        | 34              | 40   | 56   | 64,5  | 91    | 50                | 60 | 1,09                      | TS 42  | TS 42 daxx |
| S               | 630                      | <b>10</b>  | M18x1,5                        | 6               | 17,5 | 29   | 35    | 51    | 19                | 22 | 0,12                      | TS 10  | TS 10 daxx |
|                 | 400                      | <b>12</b>  | M20x1,5                        | 8               | 21,5 | 31   | 39,5  | 55,5  | 19                | 24 | 0,15                      | TS 12  | TS 12 daxx |
|                 | 400                      | <b>16</b>  | M24x1,5                        | 11              | 24,5 | 36,5 | 45    | 66,5  | 24                | 30 | 0,24                      | TS 16  | TS 16 daxx |
|                 | 320                      | <b>20</b>  | M30x2,0                        | 14              | 26,5 | 43   | 50    | 73    | 27                | 36 | 0,38                      | TS 20  | TS 20 daxx |
|                 | 320                      | <b>25</b>  | M36x2,0                        | 18              | 30   | 48   | 57    | 85    | 36                | 46 | 0,72                      | TS 25  | TS 25 daxx |
|                 | 250                      | <b>30</b>  | M42x2,0                        | 23              | 35,5 | 55   | 64    | 93,5  | 41                | 50 | 0,94                      | TS 30  | TS 30 daxx |
|                 | 250                      | <b>38</b>  | M52x2,0                        | 30              | 41   | 63   | 73,5  | 106   | 50                | 60 | 1,49                      | TS 38  | TS 38 daxx |
|                 | 250                      | <b>50</b>  | M68x2,0                        | 40              | 67   | 94   | 106,5 | 135,5 | 70                | 80 | 4,60                      | TS 50  | TS 50 daxx |

1 Druckeinschränkung wegen Drahtstiftmutter! | Pressure restrictions due to wire nail nut!

2 Bitte beachten Sie, dass der Innendurchmesser (di) durch die Kegelseite reduziert wird. | Please note that the inside diameter (di) is reduced by the cone side.